

## COMPANY UPDATE

26 May 2016



Dear Stakeholder,

with you, for you 

### **New Management Structure**

Care Consultancy is very pleased to announce a restructure our management team to lead the company through the next stage of growth as we prepare to make the most of the emerging world of customer driven care and health services.

Previously the Managing Director has supported a Management Team that centred on the Operations Manager and was complemented by a Services Manager and a Quality Manager. Recent additions to the growing team have been David Haynes in the role of Business Manager and Wendy Edwards as Projects Manager with a vacancy in the Services Manager role.

Following companywide consultation and planning to meet present and future needs, I am excited to advise that the Board has approved the following changes, effective from 1 July 2016:

Joe Towns will be promoted to the role of Chairman and will continue as Managing Director and Proprietor; and Stelvio Vido will take on the role of Deputy Chairman.

Wendy Edwards has been promoted to the role of Chief Executive Officer; and Jane Smith has accepted a voluntary redundancy in her role as Operations Manager.

David Haynes has been promoted to the role of Deputy CEO and will retain the functions of business manager within this role that includes a planning, performance and information portfolio.

Louise Phillips has been promoted to Clinical and Services Manager; and Julie Woodcock has been appointed Deputy Clinical and Services Manager.

Terry Dalby has been appointed Finance and Administration Manager and will continue in his accounting role in representing Care Consultancy Finance and Tax Pty Ltd.

Marianne Fisher has been appointed Corporate Services Manager and will retain the functions of quality manager in this role, with an expanded portfolio.

Please find attached an updated company management structure, with revised reporting lines. A new role delineation document details the functions and responsibilities of each position within this new management structure.

I congratulate the company and the entire team on working so well together to position ourselves to make the most of the change and opportunity ahead.

And I thank all our stakeholders for working with us to provide value and quality, every time!

Warm regards, Joe

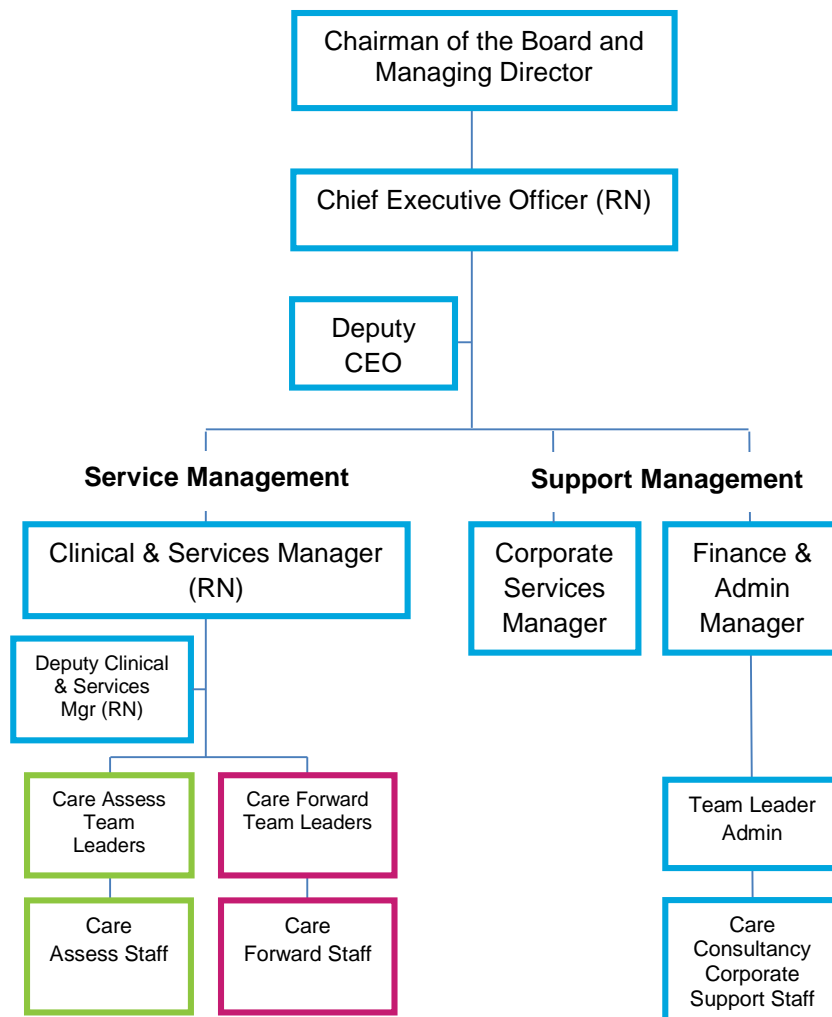


with you, for you

## COMPANY UPDATE

From 1 July 2016

### New Management Structure



#### Note:

- New reporting lines.
- Separation between Care Assess and Care Forward.
- Clinical governance through Registered Nurses (RN) at the CEO and Service Management level.

